

From 1st order controls to 1st drill holes – Kenorland’s targeting strategy for greenfields exploration

Presented by David Stevenson – Kenorland Minerals Ltd.



Disclaimer and Qualified Person

- The information contained herein, while obtained from sources which we believe are reliable, is not guaranteed as to its accuracy or completeness. References are made herein to historical information containing geologic and technical information. By its nature, this information cannot be verified. A Qualified Person has not verified the sampling, analytical, and test data underlying the historical information. Kenorland Minerals (The Company) has assumed that this historical information is accurate and complete in all material aspects and, while the Company has carefully reviewed all the available information, it cannot guarantee its accuracy and completeness. The content of this presentation is for information purposes only and does not constitute an offer to sell or a solicitation to purchase any securities referred to herein.
- This presentation contains "forward-looking statements" within the meaning of applicable securities legislation. These forward-looking statements are made as of the date of this presentation and the Company does not intend, and does not assume any obligation, to update these forward-looking statements, except as required by law.
- Forward-looking statements may include, but are not limited to, statements with respect to the future price of metals, the estimation of mineral resources, the realization of mineral resource estimates, the timing and amount of estimated future production, capital expenditures, success of exploration activities, permitting time lines, requirements for additional capital, government regulation of mining operations, environmental risks, unanticipated reclamation expenses, title disputes or claims, limitations on insurance coverage, the completion of transactions and future listings and regulatory approvals. In certain cases, forward-looking statements can be identified by the use of words such as "plans", "expects" or "does not expect", "is expected", "budget", "scheduled", "estimates", "forecasts", "intends", "anticipates" or "does not anticipate", or "believes", or variations of such words and phrases or state that certain actions, events or results "may", "could", "would", "might" or "will be taken", "occur" or "be achieved".
- Forward-looking information in this presentation includes, among other things, disclosure regarding: the Company's mineral properties as well as its future outlook, statements with respect to the future price of minerals, the success of exploration activities, permitting timelines, costs and expenditures requirements for additional capital, future listings and regulatory approval.
- In making the forward looking statements in this presentation, the Company has applied certain factors and assumptions that it believes are reasonable, including that there is no material deterioration in general business and economic conditions; that the supply and demand for, deliveries of, and the level and volatility of prices of the Company's primary metals and minerals develop as expected; that the Company receives regulatory and governmental approvals for its properties on a timely basis; that the Company is able to obtain financing for its properties on reasonable terms; that the Company is able to procure equipment and supplies in sufficient quantities and on a timely basis; that engineering and exploration timetables and capital costs for the Company's exploration plans are not incorrectly estimated or affected by unforeseen circumstances; that any environmental and other proceedings or disputes are satisfactorily resolved; and that the Company maintain its ongoing relations with its business partners.
- However, forward-looking statements involve known and unknown risks, uncertainties and other factors which may cause the actual results, performance or achievements of the Company to be materially different from any future results, performance or achievements expressed or implied by the forward-looking statements. Such factors may include, among others, actual results of current exploration activities; actual results of reclamation activities; future metal prices; accidents, labor disputes and other risks of the mining industry; delays in obtaining governmental or regulatory approvals or financing or in the completion of exploration activities, as well as those factors discussed in the section entitled "Risk Factors" in this presentation. Although the Company has attempted to identify important factors that could cause actual actions, events or results to differ materially from those described in forward-looking statements, there may be other factors that cause actions, events or results not to be as anticipated, estimated or intended. There can be no assurance that forward-looking statements will prove to be accurate, as actual results and future events could differ materially from those anticipated in such statements.
- Accordingly, readers should not place undue reliance on forward-looking statements. The Company does not undertake to update any forward-looking statements, except in accordance with applicable securities laws.
- Qualified Person's Statement: Janek Wozniowski, P.Geo., OGQ (#2239), Vice President of Operations, Kenorland, is the Qualified Person as defined by National Instrument 43-101, Standards of Disclosure for Mineral Projects. Mr. Wozniowski is responsible for the scientific and technical data presented herein and has reviewed and approved this project summary. Of note, historical results reported herein have not been verified by Kenorland personnel. Surface grab samples are selective by nature and are unlikely to represent average grades of the mineralization found on the property.

Management, Directors, Advisors and Technical Team



Zach Flood
CEO and Director



Yu Yamato
Director



Rick Trotman
Director



Jay Sujir
Director



Jamie Levy
Director



Jessica Van Den Akker
Director



Francis MacDonald
President



Scott Smits
VP Exploration



Janek Wozniewski
VP Operations



Dave Stevenson
Chief Geophysicist



Andy Orr
Chief Geologist



Alex Gallardo
Exploration Manager



Vytas Banys
Exploration Manager



Enoch Kong
CFO



Shauna Hartman
Legal Counsel



Alan Hutchison
Legal Counsel



Peter Meredith
Advisor



Mikhail Minin
Data Scientist

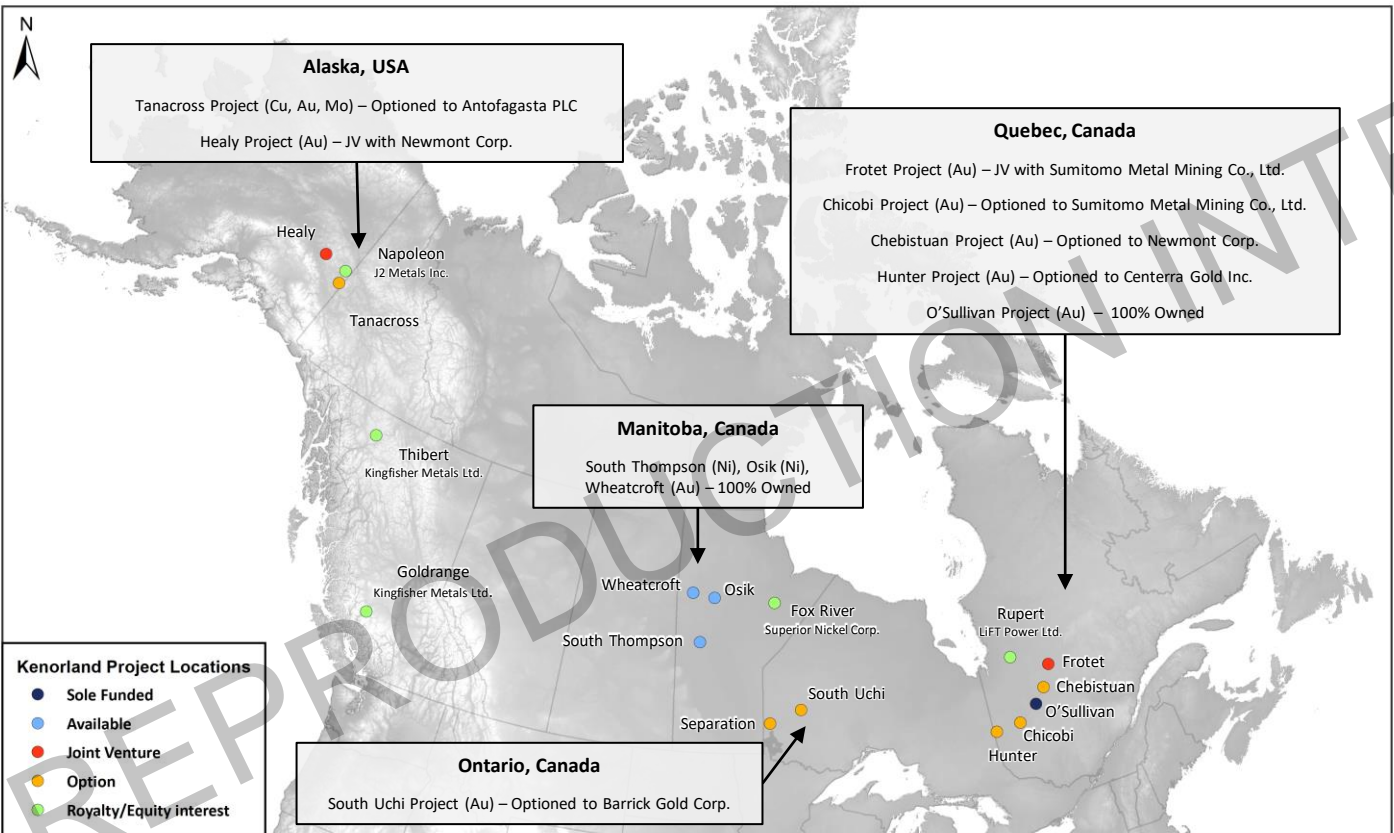


David I. Grove
Technical Advisor



David Broughton
Technical Advisor

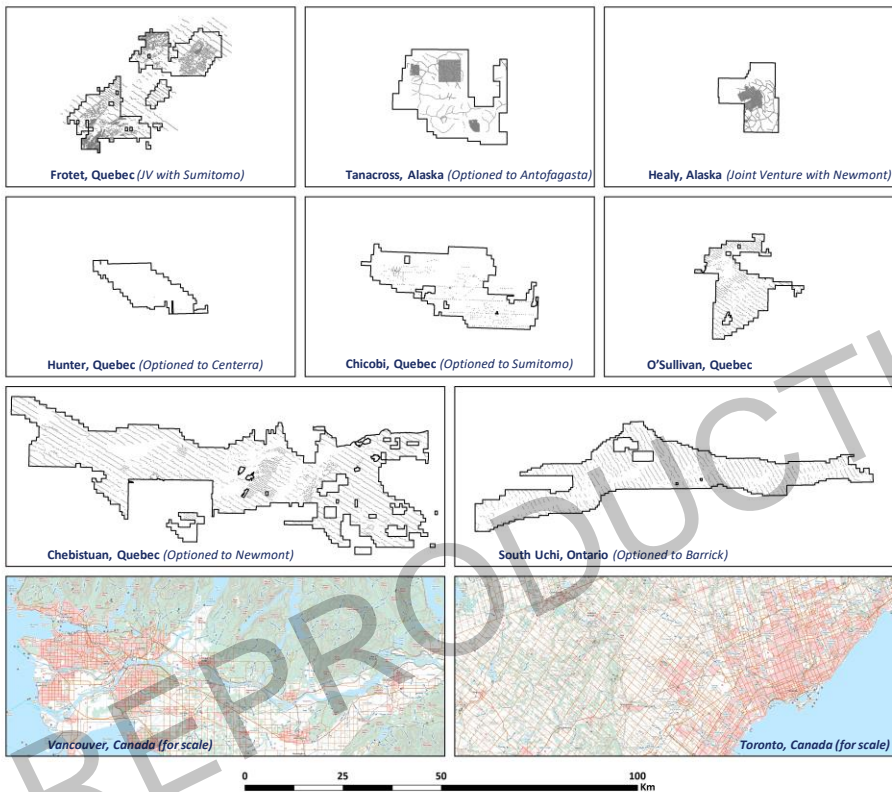
Kenorland Projects: North America



Quebec Interest:

- 595,000 ha of tenure
- ~\$40m spent on KLD Quebec exploration since 2016 (64% of total expenditures)
- ~\$5m sole-funded expenditures (\$35m partner-funded exploration)

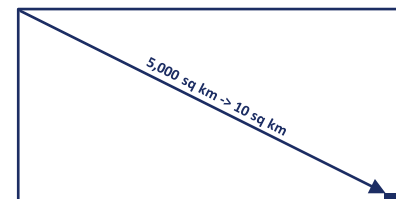
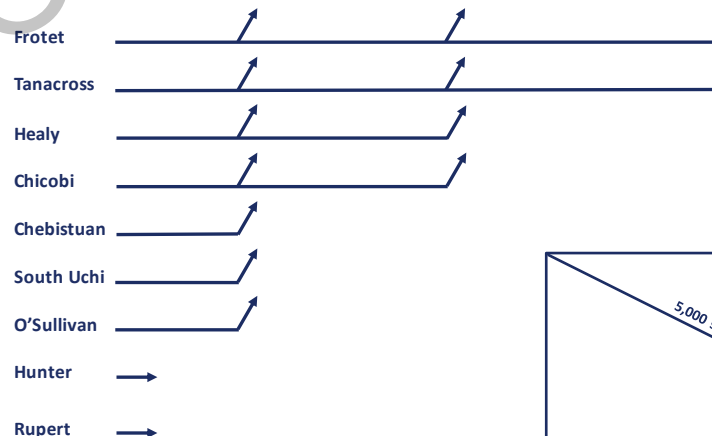
Kenorland Projects: Greenfields Exploration



Greenfields Exploration

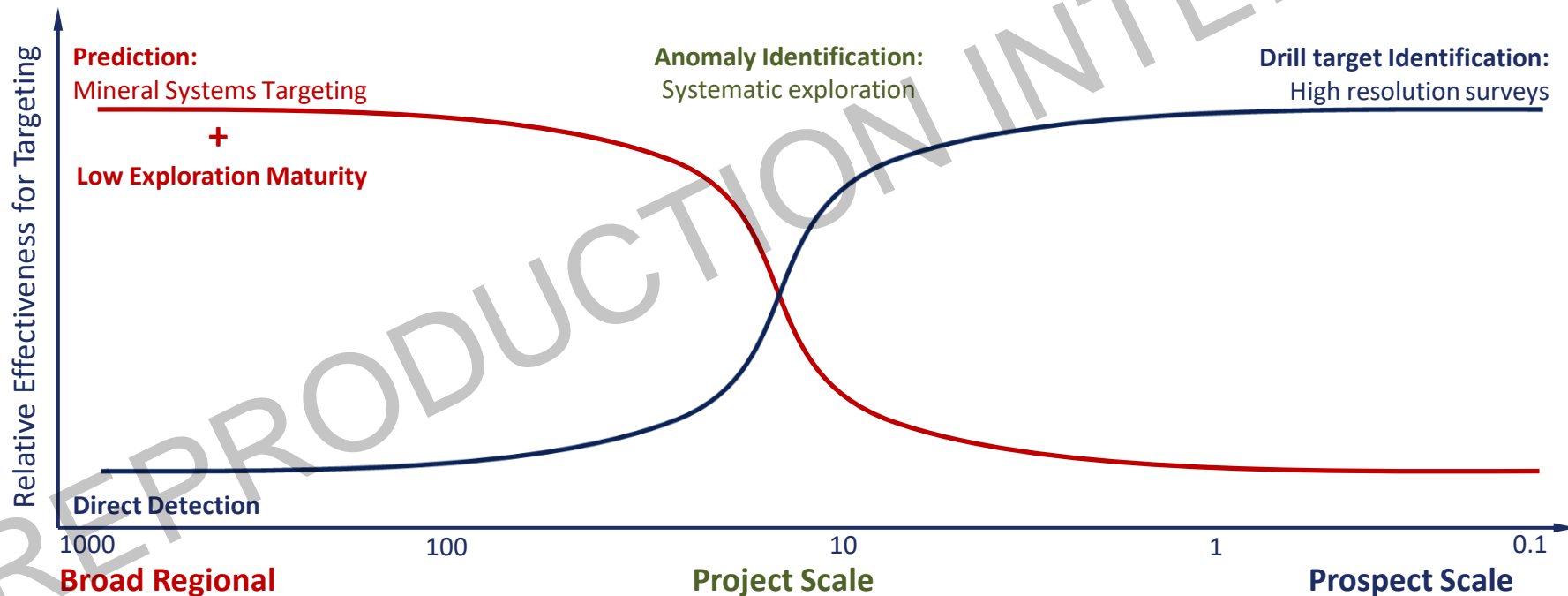
Hectares of mineral tenure	889,957
Geochemical surface samples	35,000+
Line-km of ground geophysics	850+
Line-km of airborne geophysics	16,000+
Drilled meters	60,000+

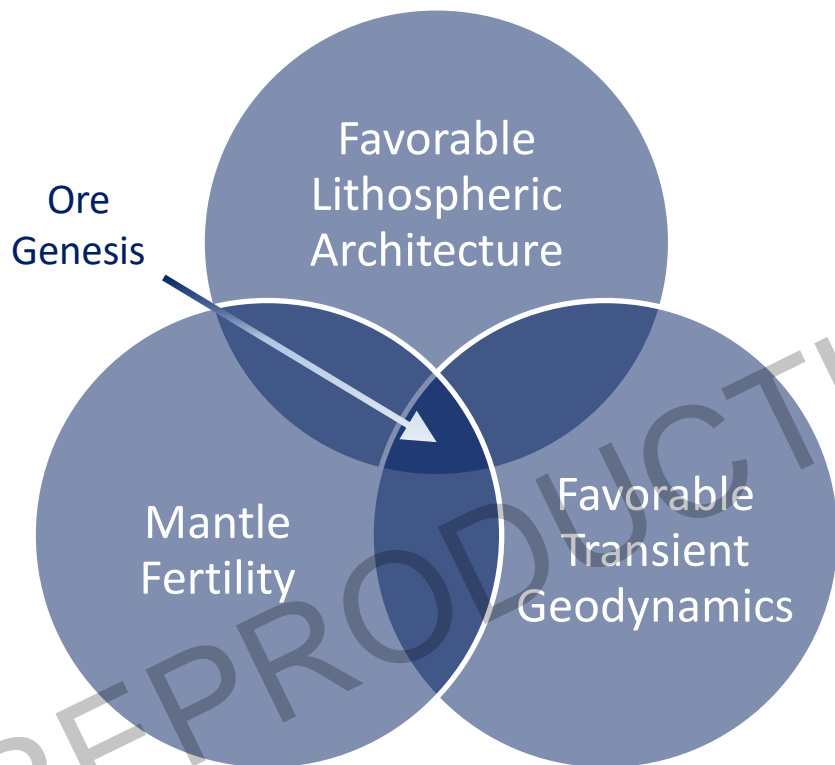
EXPLORATION PIPELINE



Kenorland's Approach to Scale Reduction

- ✓ **Area Selection:** Are we in the right place?
- ✓ **Project scale:** Can we apply a systematic screening ?
- ✓ **Prospect Scale:** Coherent geochemical anomaly \pm geophysical signature?





Architecture:

- Geophysics
 - Potential fields, MT, Seismic (reflection & tomography)
- Isotope mapping
 - Lu-Hf, Sm-Nd, O, etc.
- Geological proxies

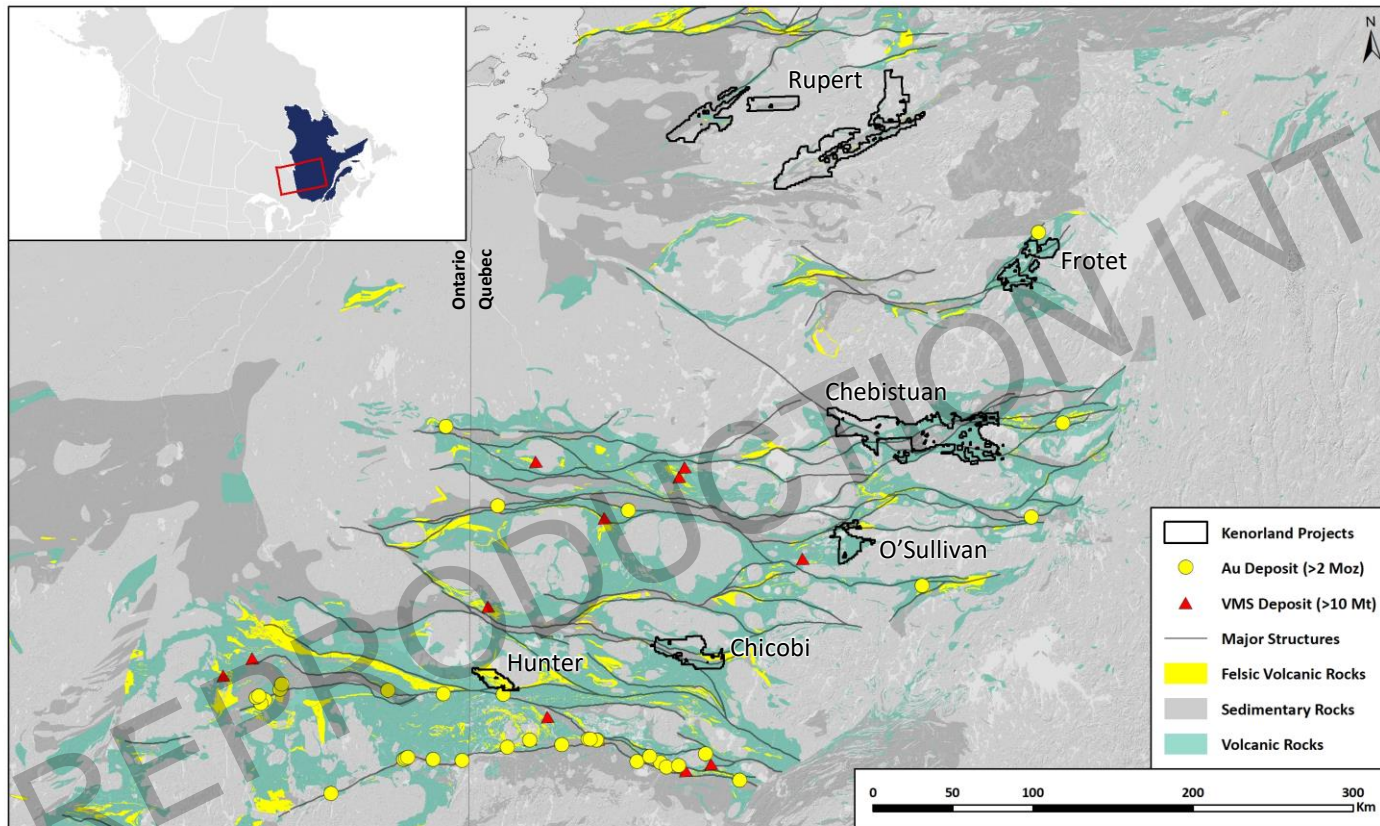
Fertility:

- Metasomatised SCLM
 - Isotope geochemistry, whole rock, etc.
- Other deposits in belt

Geodynamic Trigger:

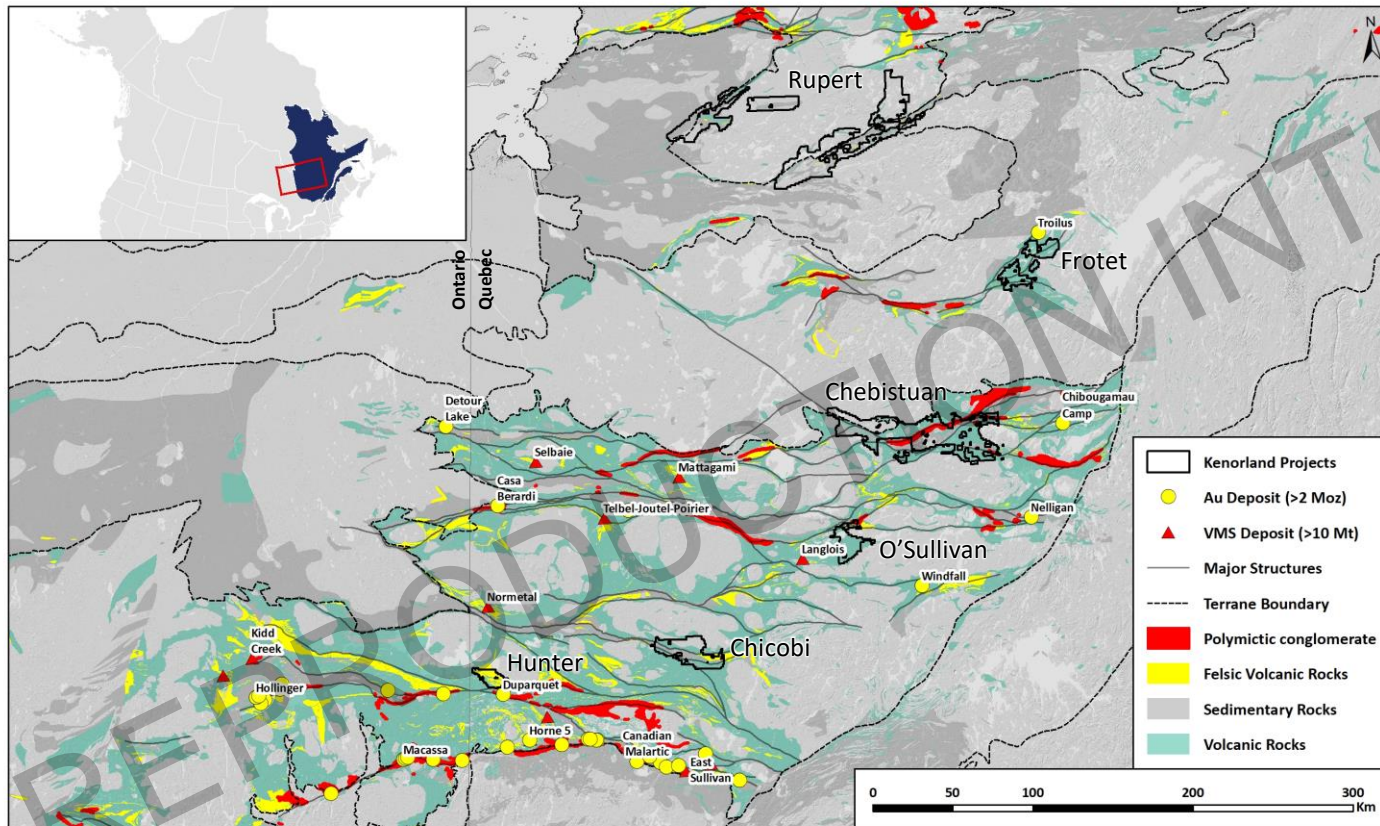
- Dependent on deposit type
 - Structural complexity as proxy

Kenorland's Quebec Projects: Regional Geology



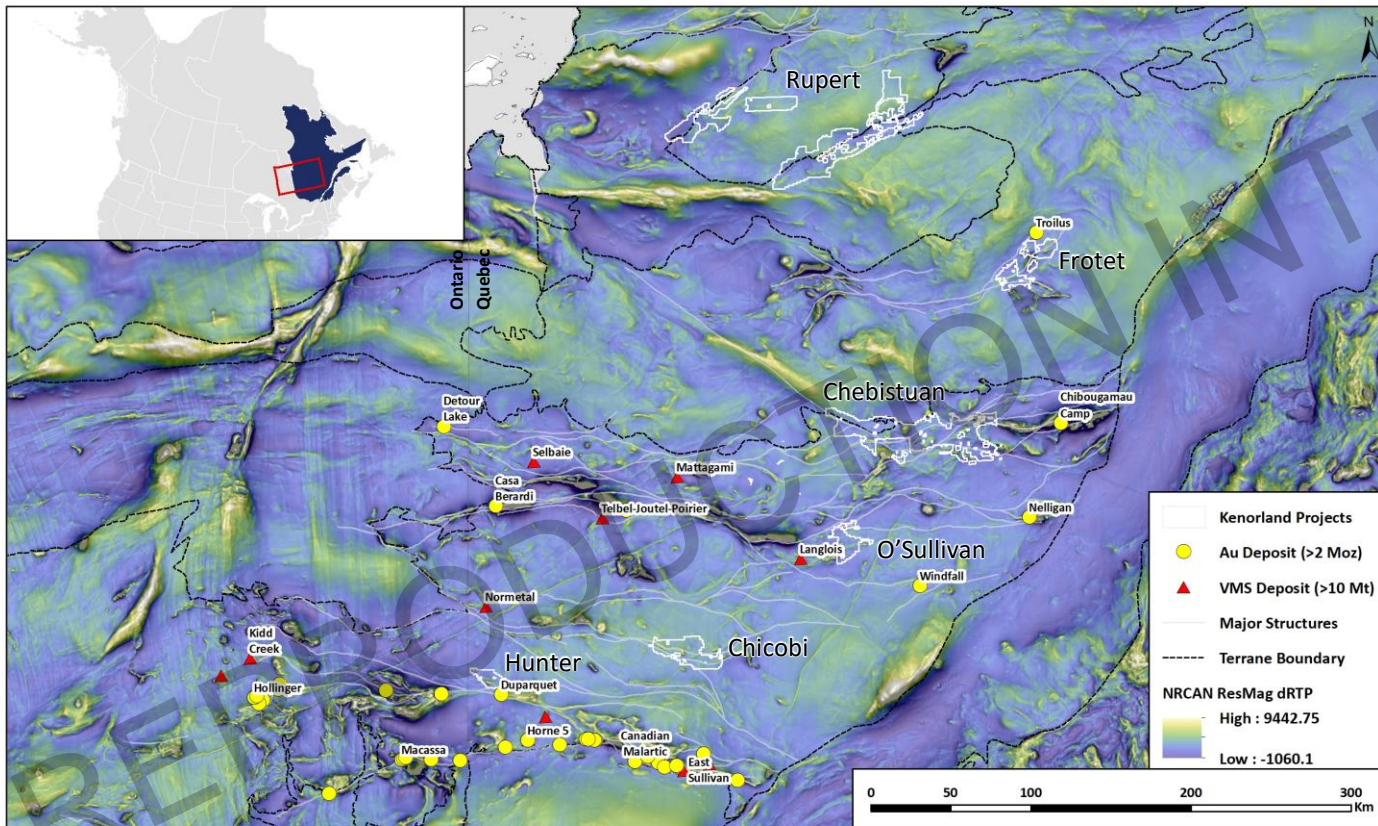
- Kenorland Minerals has 6 projects in the Abitibi & James Bay regions of Quebec
- Project areas were identified utilising open-source, pre-competitive government datasets & academic studies
 - Provincial geological data
 - Regional geochemical surveys
 - Regional geophysical surveys
 - Compiled assessment reports
 - Journal articles, theses, etc.
- All projects were acquired though map-staking
 - Where warranted small claim packages and individual claims were acquired & consolidated into the larger project areas

Kenorland's Quebec Projects: Regional Geology



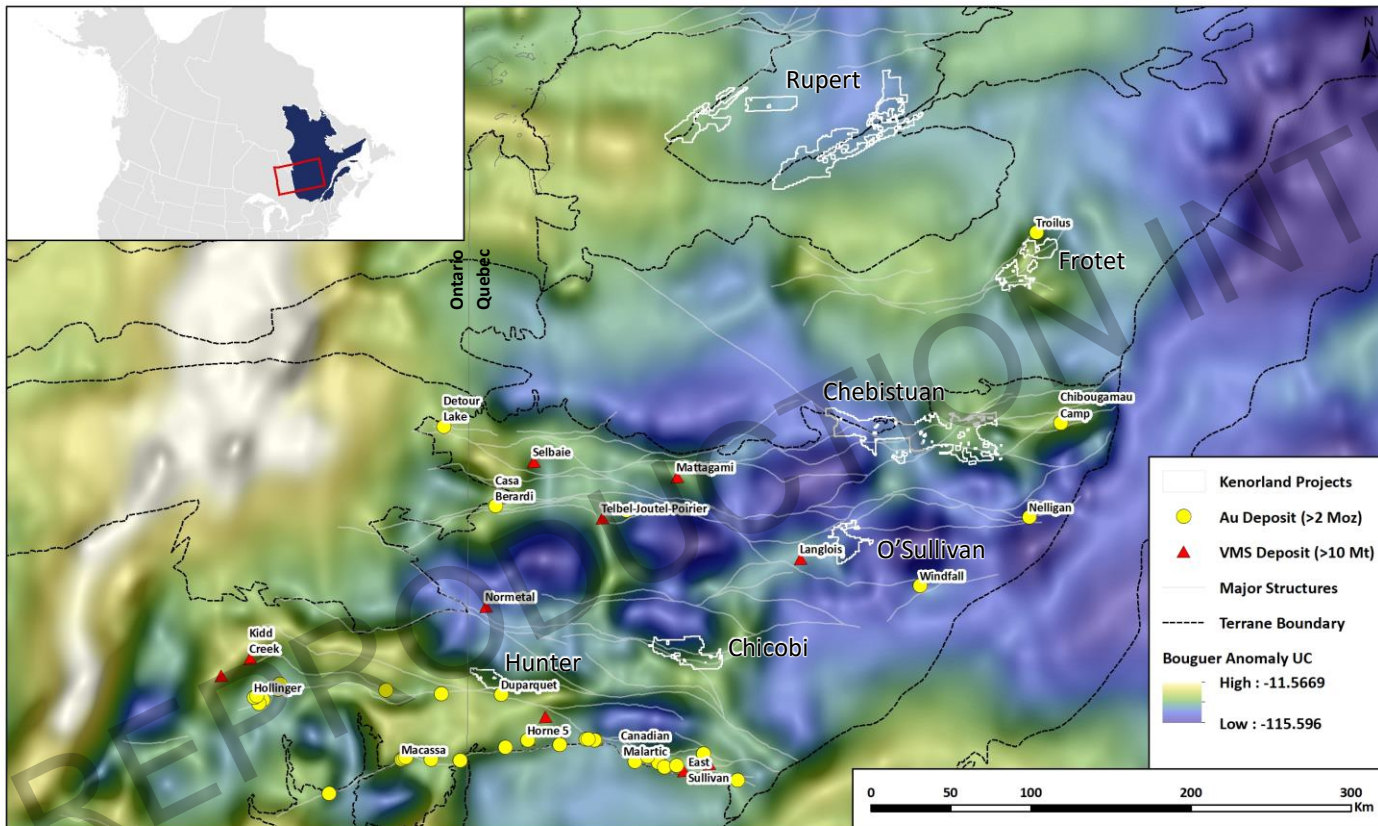
- Au camps are typically controlled by major breaks (structures)
- In the Abitibi Greenstone Belt there is a spatial correlation between orogenic Au & polymictic conglomerates
 - Polymictic conglomerates identified as a proxy for zones of major uplift / deformation along major breaks
- The Rupert Project (Li) covers a sub-province boundary identified as prospective for LCT- pegmatite mineralisation

Kenorland's Quebec Projects: Regional Magnetic Data



- Kenorland applies in-house geophysical enhancements to open-source geophysical data
- Derivative datasets are used to scrutinise regional geological features & identify regional scale architecture
- Re-interpretations of regional scale data are utilised in Area Selection targeting
- Image:
 - Filtered NRCAN magnetic data with major deposits, Kenorland Tenure, major geologic structures and terrane boundaries overlain

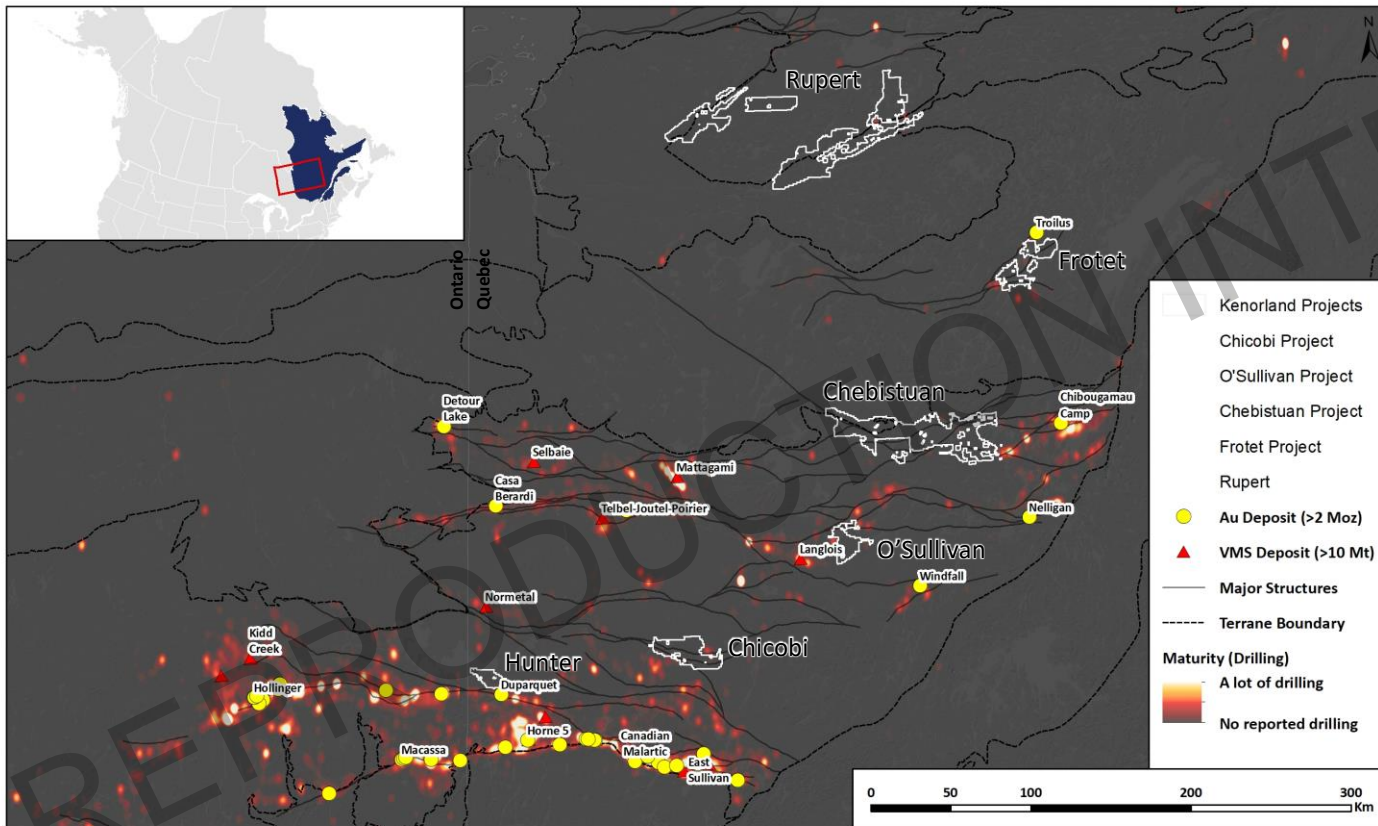
Kenorland's Quebec Projects: Regional Gravity Data



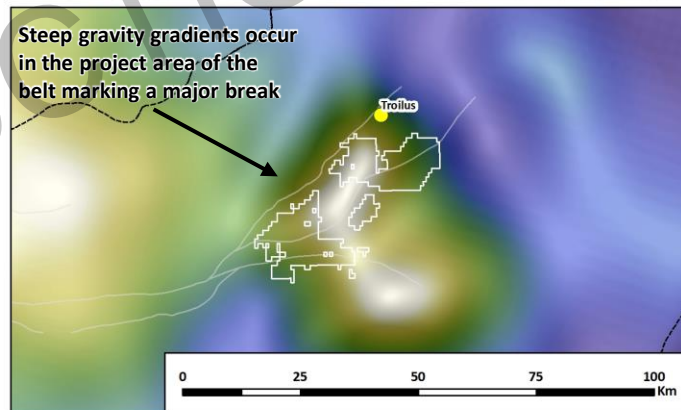
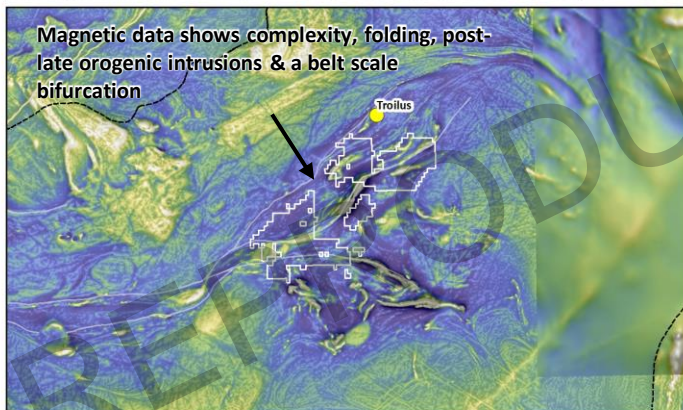
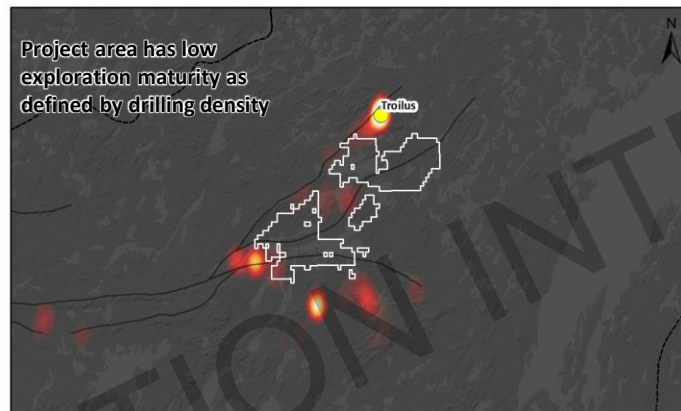
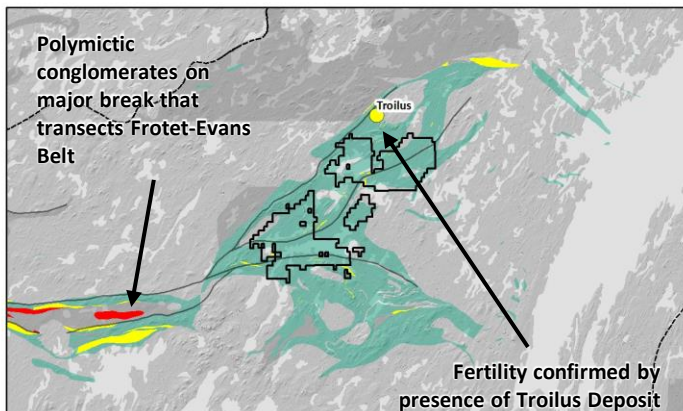
- Kenorland applies in-house geophysical enhancements to open-source geophysical data
- Derivative datasets are used to scrutinise regional geological features & identify regional scale architecture
- Re-interpretations of regional scale data are utilised in Area Selection targeting
- Image:
 - Filtered NRCAN gravity data with major deposits, Kenorland Tenure, major geologic structures and terrane boundaries overlain

Kenorland's Quebec Projects: Exploration Maturity

- Kenorland utilises compilation & GIS mapping of historical exploration data in order to quantify exploration maturity
- Kenorland's team incorporates exploration maturity layers into targeting exercises
- Priority 1 targets = areas of high prospectivity and low exploration maturity
- Image:
 - Exploration Maturity product produced through gridding of historical meters / unit area

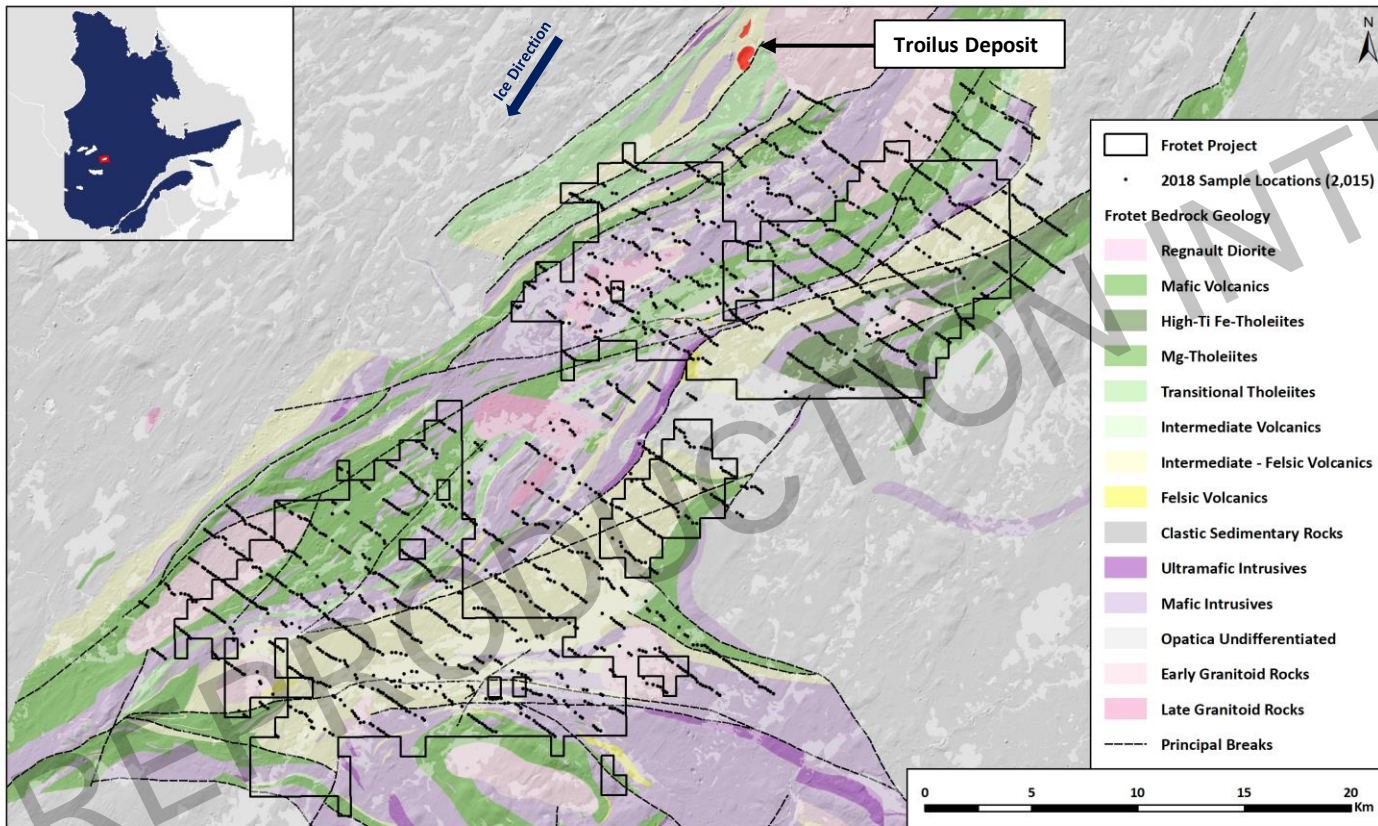


Frotet Project: Regional Overview



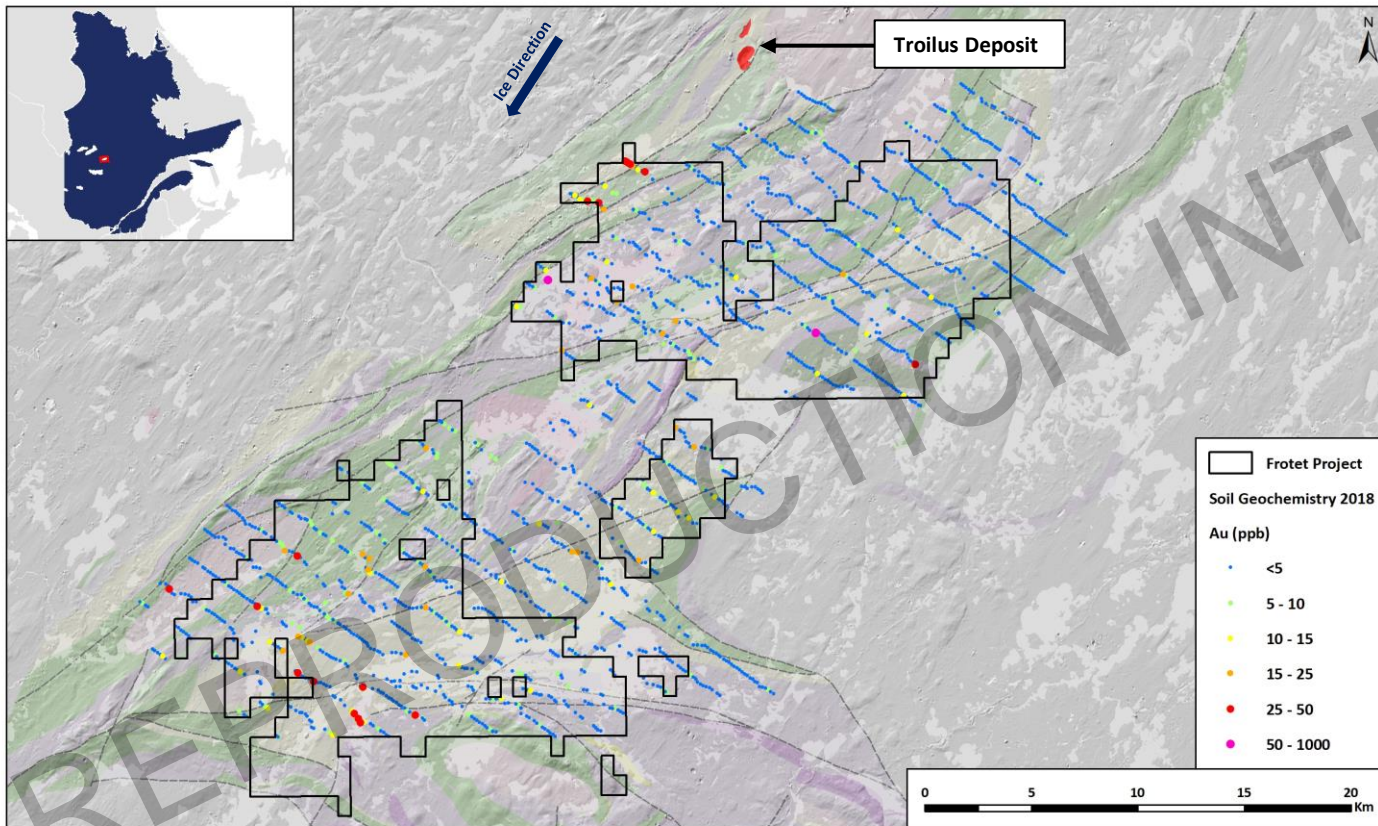
- Location:
 - Frotet-Evans Greenstone Belt within the Optica Sub-Province
- 2018:
 - Project identified through combined prospectivity & exploration maturity mapping
 - 56,000 ha staked & optioned to Sumitomo Metal Mining Co Ltd.
- 2018-2019:
 - Systematic screening
 - Tenure reduced: 39,365ha
- 2019:
 - 408 g/t Au in boulder at Regnault
- Today:
 - 56,989m (158 DDH) at Regnault
 - Follow-up on regional targets

Frotet Project: Systematic Screening



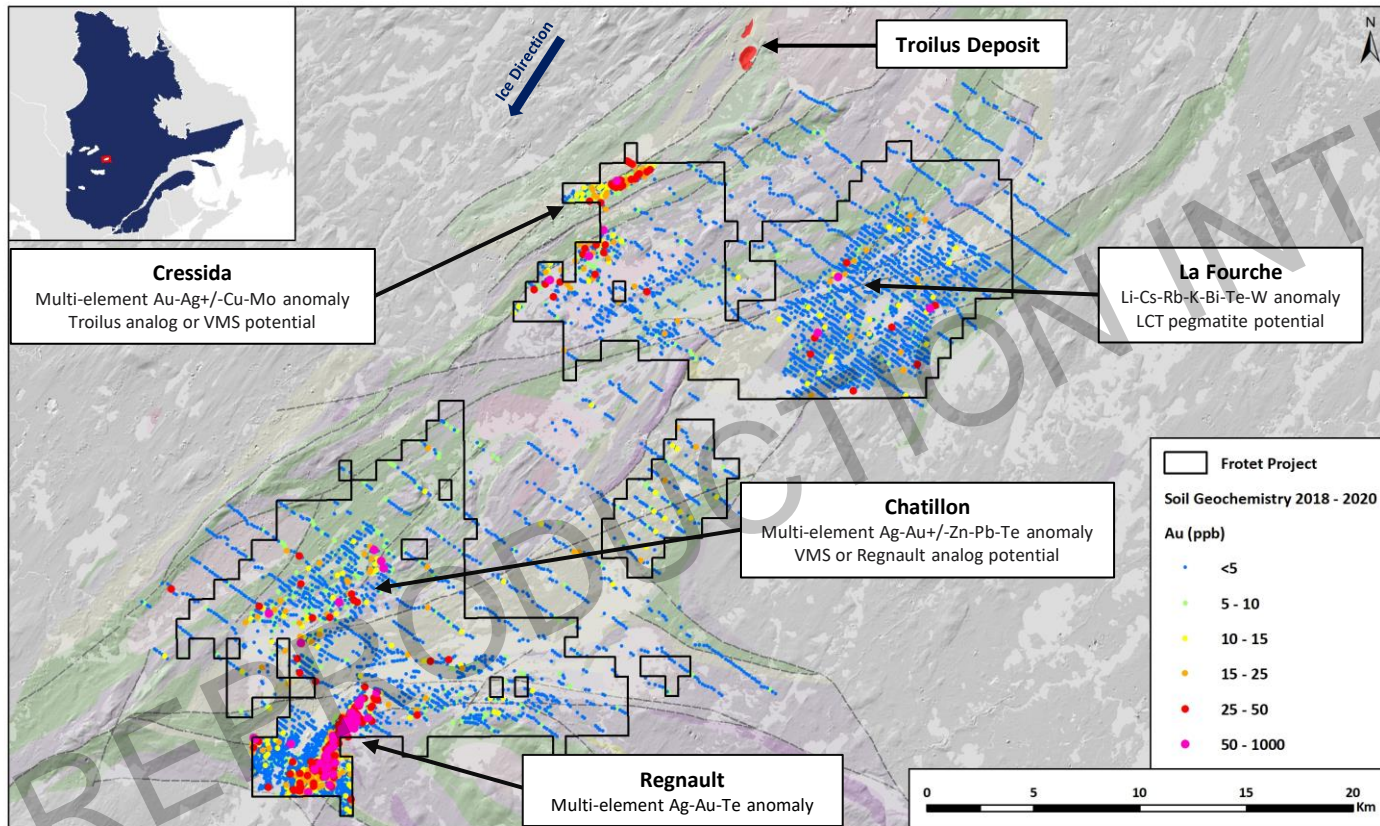
- **Geology:**
 - The Frotet-Evans greenstone belt is comprised of multiple cycles of tholeiitic to calc-alkaline volcanism and magmatism
 - Multiple structures and regional scale folds occur within the belt = prospective for orogenic Au
 - The past producing Troilus Au-Cu deposit occurs within the belt highlighting the prospectivity for intrusion style mineralisation
- The entire project was initially screened with using B-horizon soil sampling (glacial till substrate) on a 1500m x 150m grid (2,015 samples collected)

Frotet Project: 1st Pass screening - anomaly identification

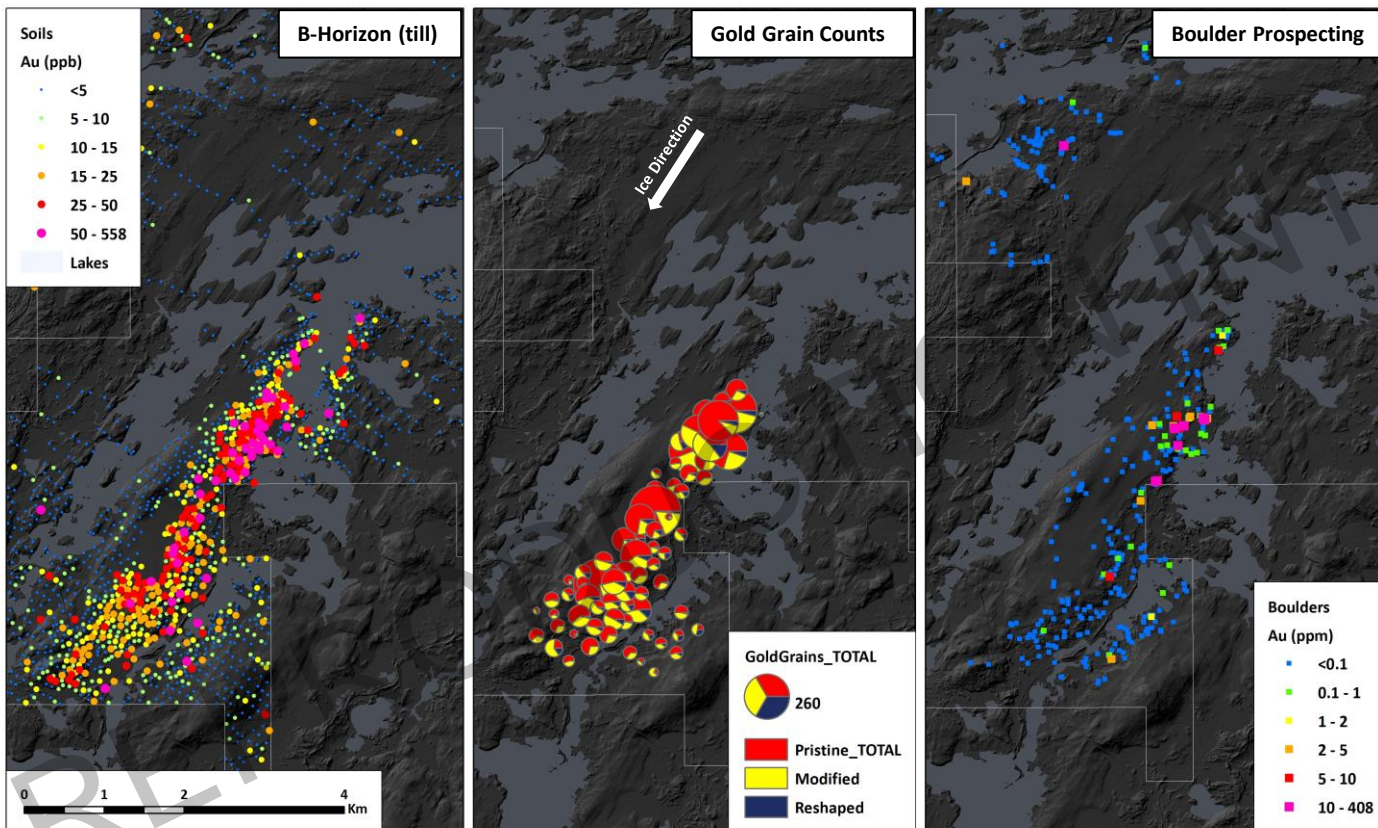


- 1st pass screening of the belt identified multiple geochemical anomalies throughout the belt
- Areas of anomalism were followed-up with infill sampling

Frotet Project: Target Identification

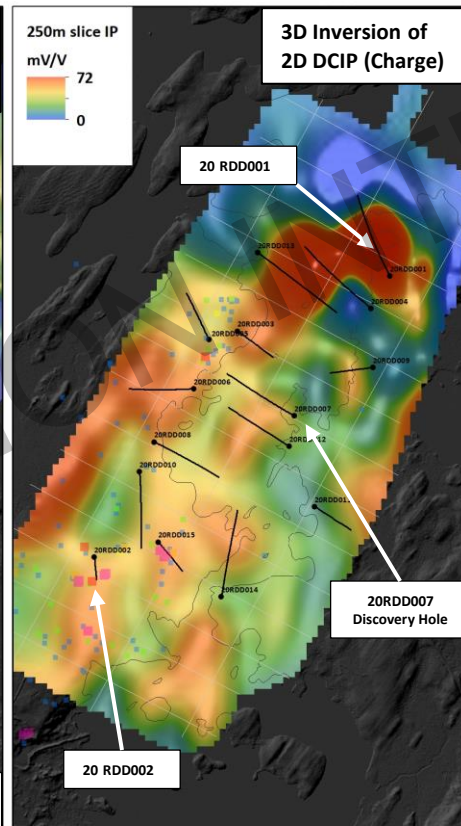
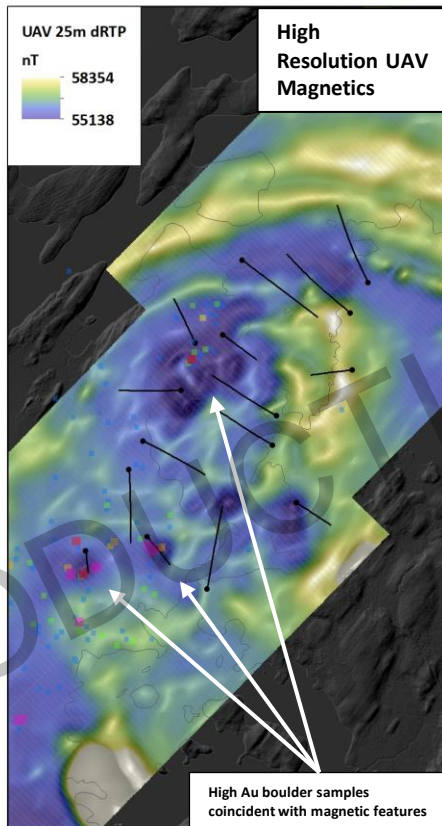
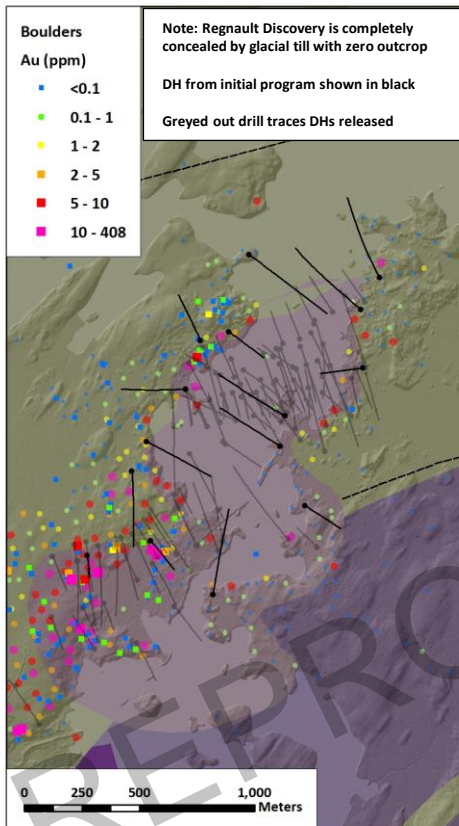


- Infill sampling identified 4 target areas, all of which were previously undocumented and not drill tested:
 - **Regnault:** high-grade Au hosted within a multi-phase intrusive complex
 - **Cressida:** extensive Au-soil anomaly on trend with Troilus
 - **Chatillon:** 1km x 1km mineralized/altered boulder field with grab samples up to 22 g/t Au
 - **La Fourche:** 1.6km x 1km Bi-W-Te-Mo-Cs-Tl-K soil anomaly



- Soil geochemistry, gold grain counts, and boulder sampling surveys all returned highly anomalous Au values
- Soil geochemistry was used to define the spatial extents of glacial dispersion
- Gold grain counts were used to determine strength of the anomaly and proximity to bedrock source
- Boulder sampling was used to understand the grade of Au in bedrock, as well as petrophysical characteristics of mineralised bedrock

Frotet Project: Regnault Geophysics & 1st Drill Program



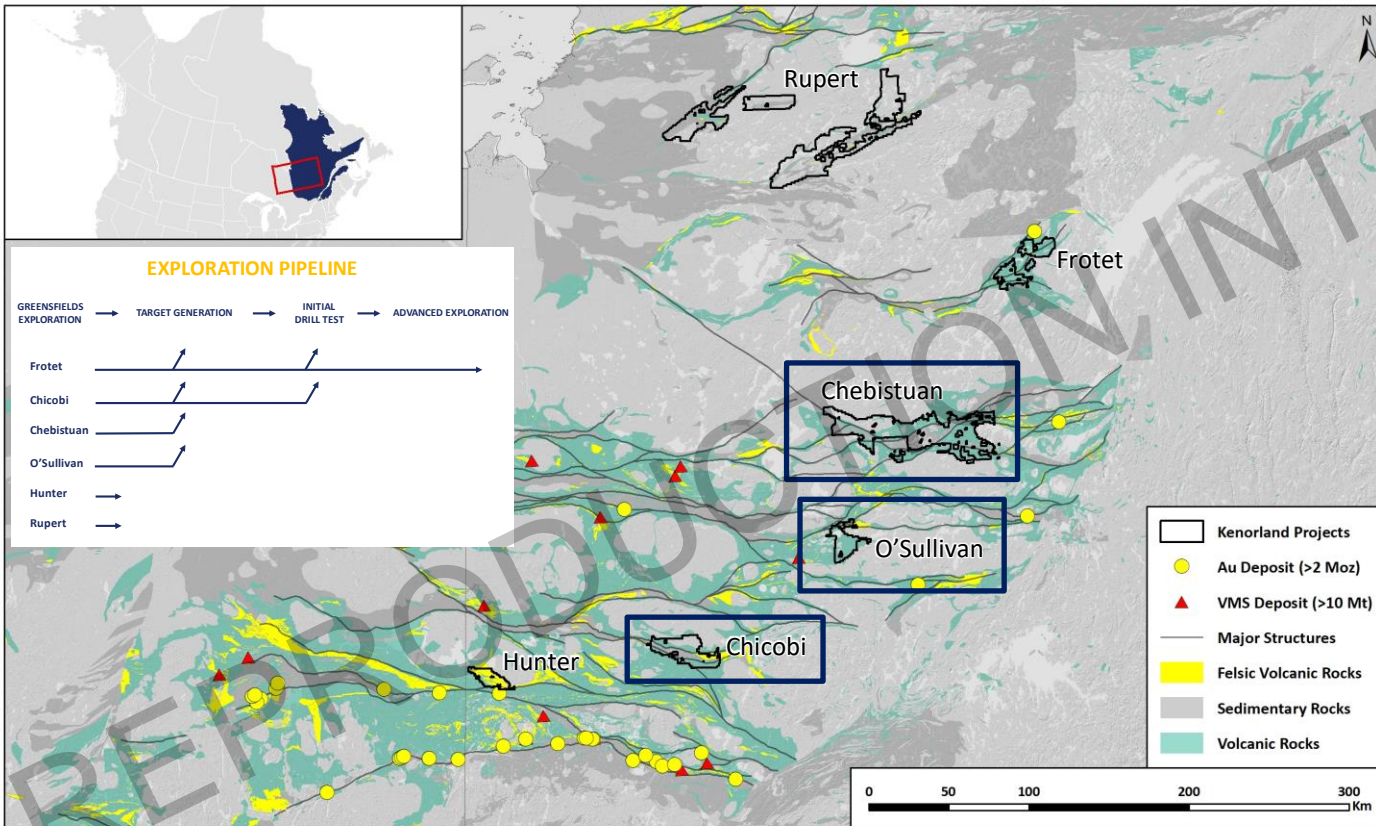
- 8 of the initial 15 DDH returned high grade Au
- 1st DDH of program tested an area with strongest DCIP chargeability – ‘Red Herring’
- 2nd DDH of program (20RDD002) intersected:
 - 0.77m @ 14.60 g/t Au
 - and 3.75m @ 16.06 g/t Au
- 20RDD007 Discovery Hole intersected:
 - 29.08m @ 8.48 g/t Au
 - Including 11.13m @ 18.43 g/t Au

- ✓ **Area Selection:** Prospectivity using Mineral Systems + low exploration maturity identified the belt as under explored
- ✓ **Project scale:** Systematic screening identified Regnault on 1st pass
- ✓ **Prospect Scale:** Hi-resolution geochemistry, prospecting & geophysics defined drill targets resulting in discovery of the Regnault System

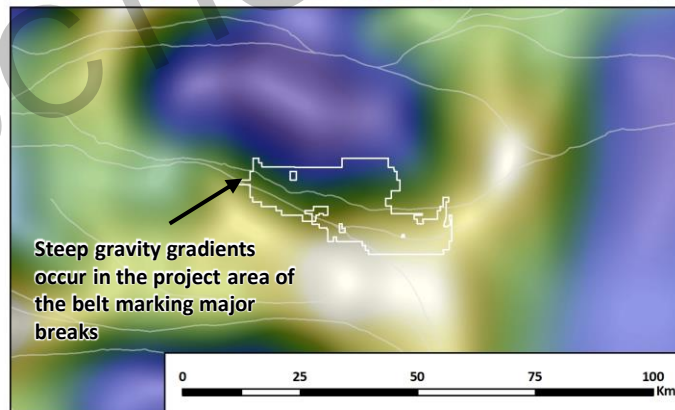
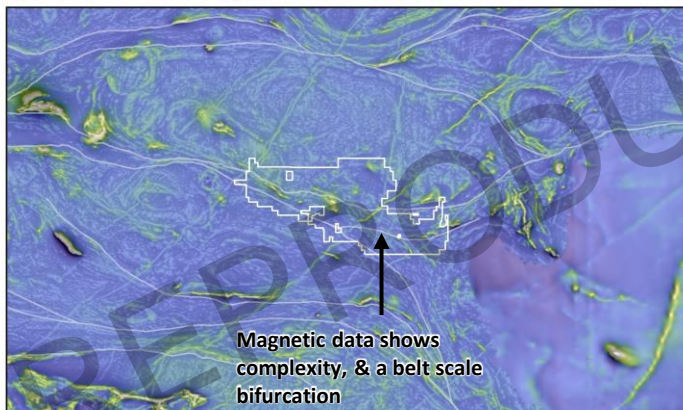
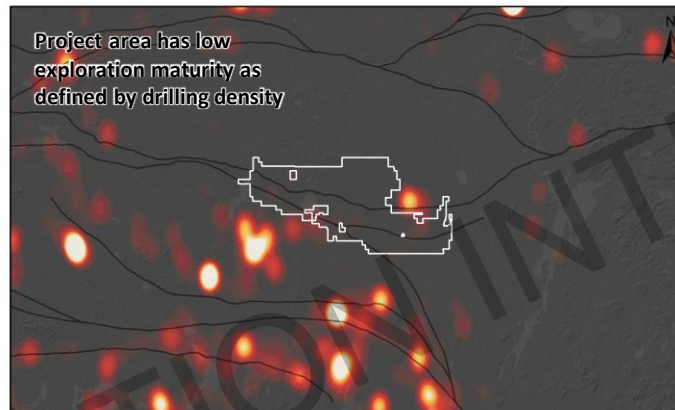
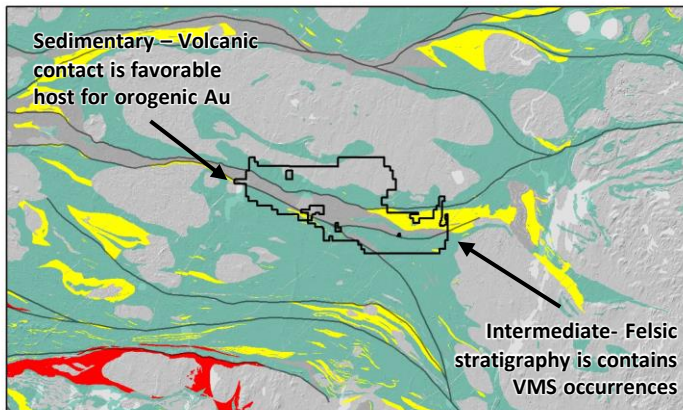


Kenorland's Quebec Projects: Next Steps Toward Discovery

- Kenorland is actively moving multiple Quebec based projects through the Exploration Pipeline
- Discovery Stage Projects:
 - Chicobi (SMM)
 - Chebistuan (Newmont)
 - O'Sullivan
- Greenfields Target Generation Projects:
 - Hunter (Centerra; sonic drilling)
 - Rupert (LiFT Power; B-Horizon till sampling)
- Not shown:
 - Additional projects have recently been staked and are entering the Exploration Pipeline

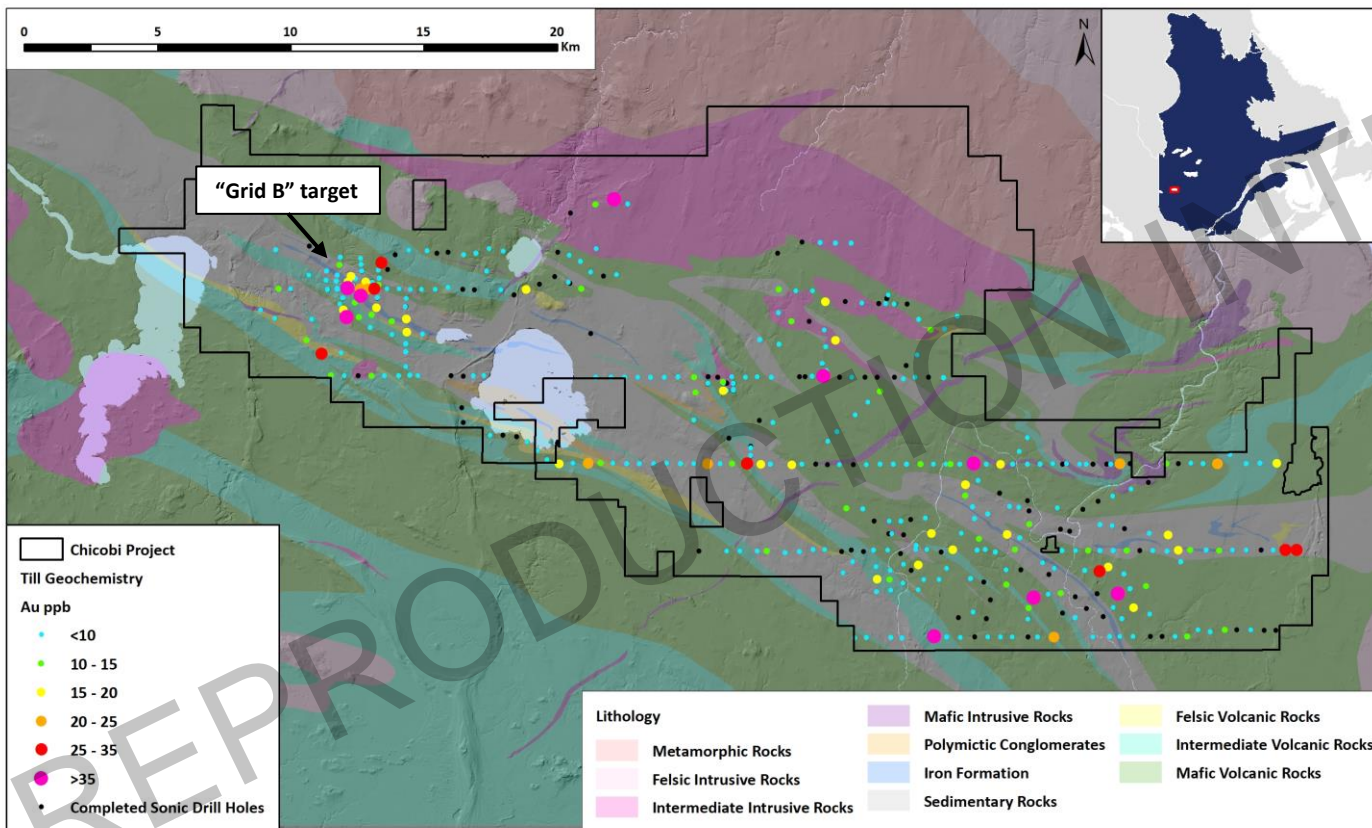


Chicobi Project: Regional Overview



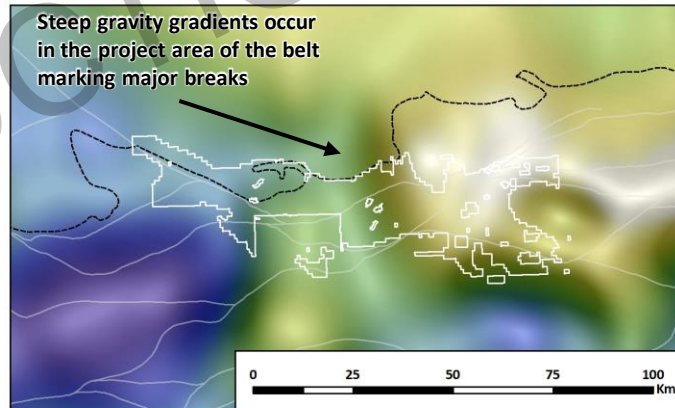
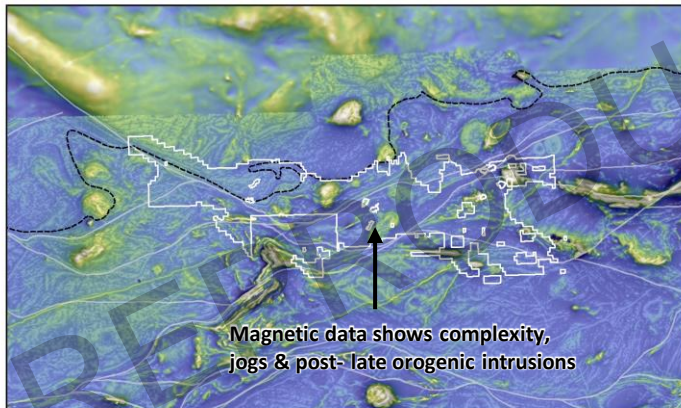
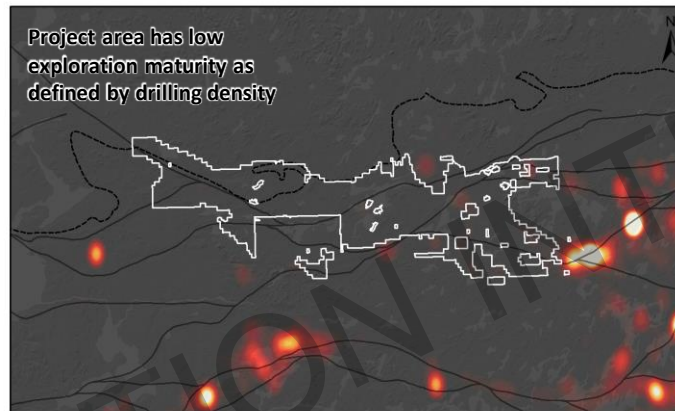
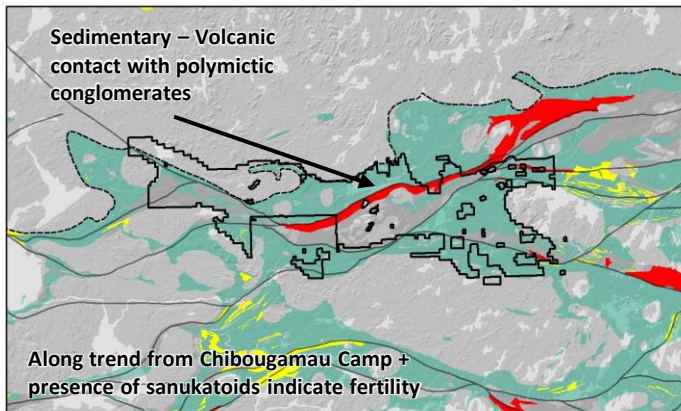
- **Size & Location:**
 - 41,775 ha in the Abitibi Greenstone Belt along the Chicobi Deformation Zone
- **Deposit Types:**
 - Orogenic Au, VMS
- **2018:**
 - Staked & optioned to Sumitomo Metal Mining Co Ltd.
- **2018-2020:**
 - Systematic screening using sonic drilling techniques
- **2021:**
 - Detailed geophysical surveys
- **2022:**
 - Initial drill test at Grid B
 - Planned follow-up sonic drilling

Chicobi Project: Ongoing exploration



- Sonic drill-for-till campaigns identified multiple geochemical anomalies to be followed-up with infill sonic drilling
- The Grid B target has been advanced with high-resolution magnetic, EM and IP geophysical surveys
- The initial drill test of Grid B has been completed with assay results pending
- Additional target areas are identified for systematic infill sonic drilling

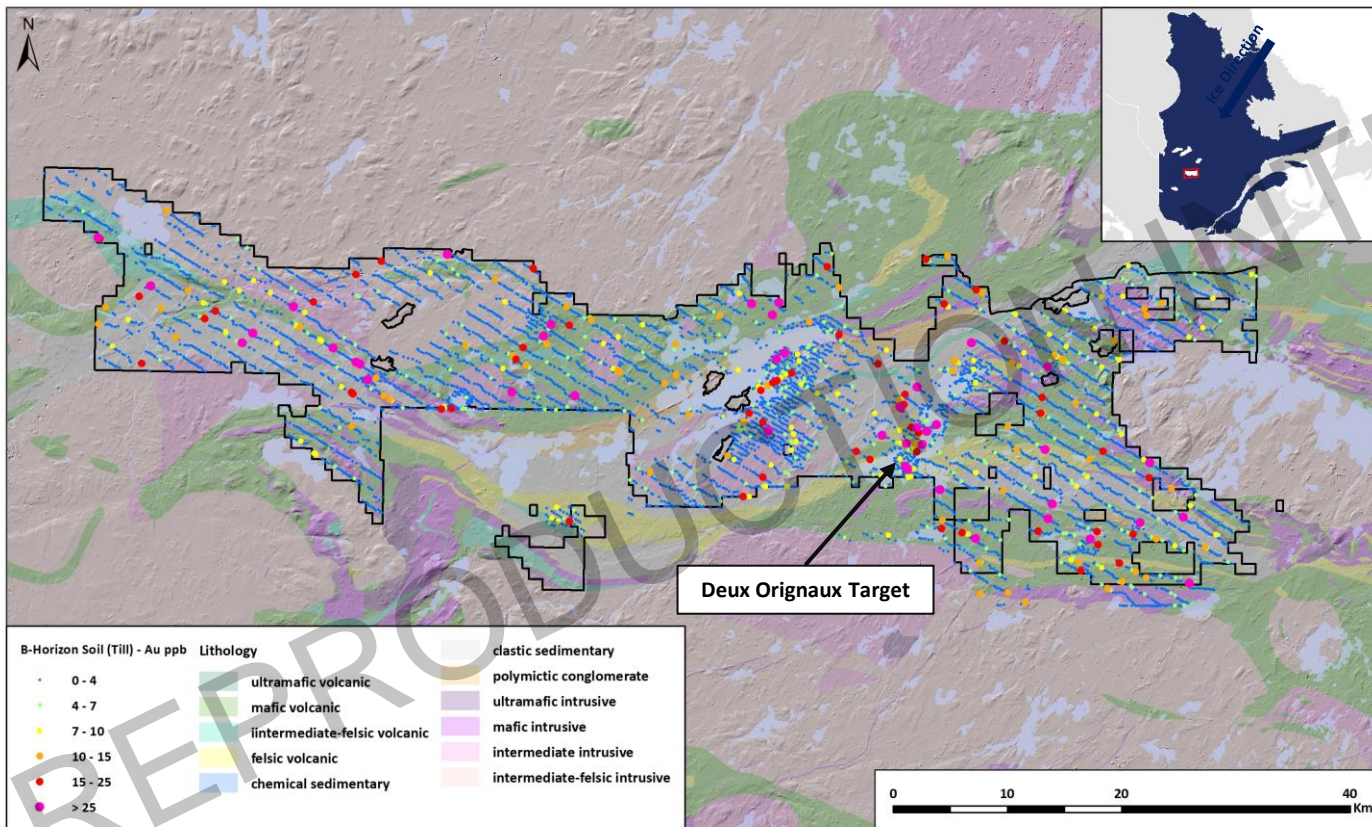
Chebistuan Project: Regional Overview



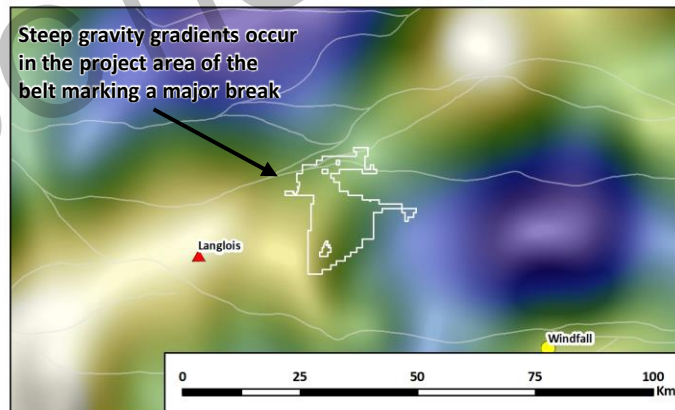
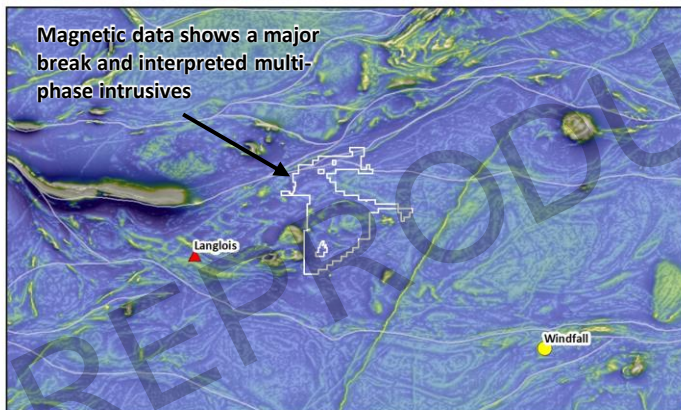
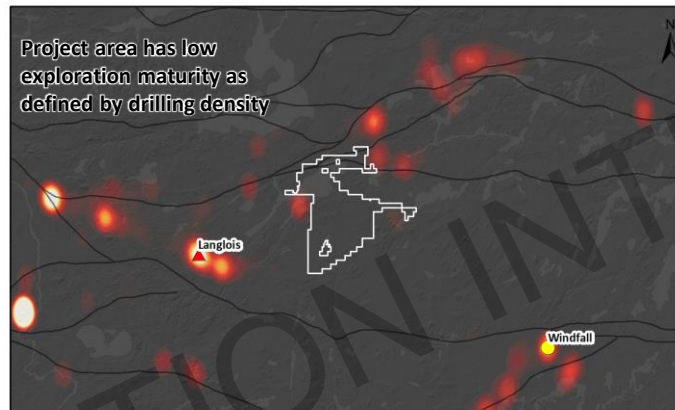
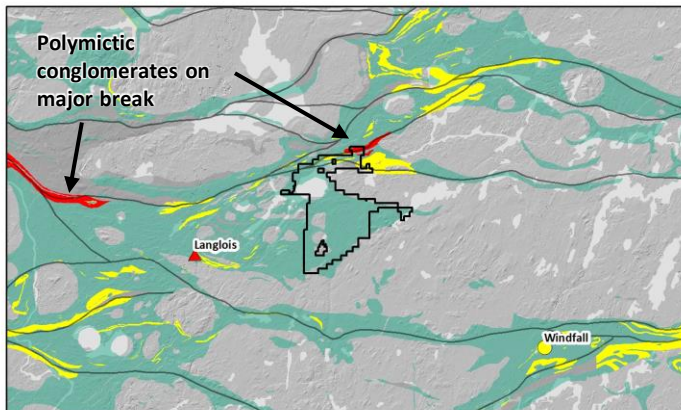
- **Size & Location:**
 - 161,025 ha in the Northern Abitibi Greenstone Belt
- **Deposit Types:**
 - Orogenic Au, Intrusive-related Au, VMS, Ni-Cu-PGE
- **2019:**
 - Staked
- **2020:**
 - Optioned to Newmont Corporation July 2020
 - Phase 1 & 2 systematic soil programs
- **2021-2022:**
 - Boulder prospecting
 - Detailed geophysical surveys

Chebistuan Project: Target Identification

- Initial screening consisted of ~4000 B-Horizon soil samples on a 1200m x 2000m grid
- Multiple targets identified for follow-up infill sampling
- Target Area “Deux Orignaux” has been advanced with boulder prospecting, high-resolution magnetic surveys, and IP geophysical surveys in preparation for an initial drill test



O'Sullivan Project: Regional Overview



- **Size & Location:**
 - 27,595 ha in the Abitibi Greenstone Belt along the Casa-Berardi Deformation Zone
- **Deposit Types:**
 - Orogenic Au, Intrusion-related Au, VMS
- **2019:**
 - Project identified and staked through map staking
- **2020:**
 - Phase 1 B-Horizon till program
- **2021:**
 - Phase 2 infill sampling



Contact

David Stevenson
Co-founder
dave@kenorlandminerals.com

info@kenorlandminerals.com
kenorlandminerals.com